

INSTALLATION MANUAL

for NISSAN MARCH



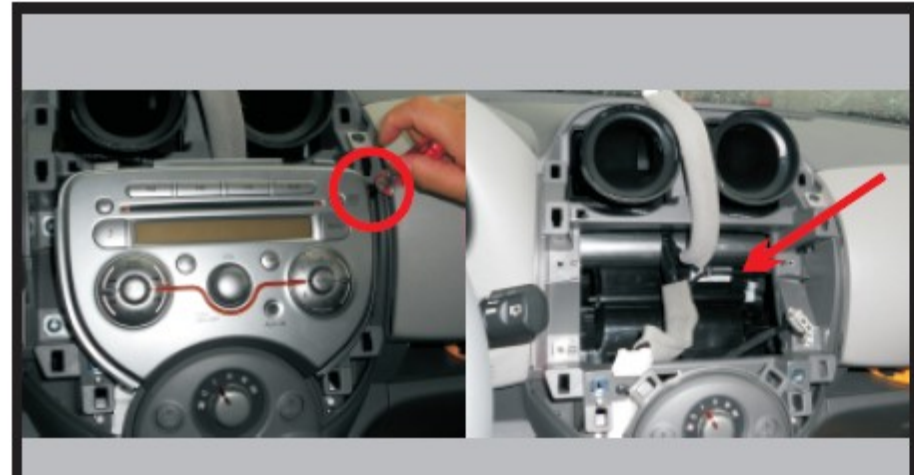
INSTALLATION MANUAL



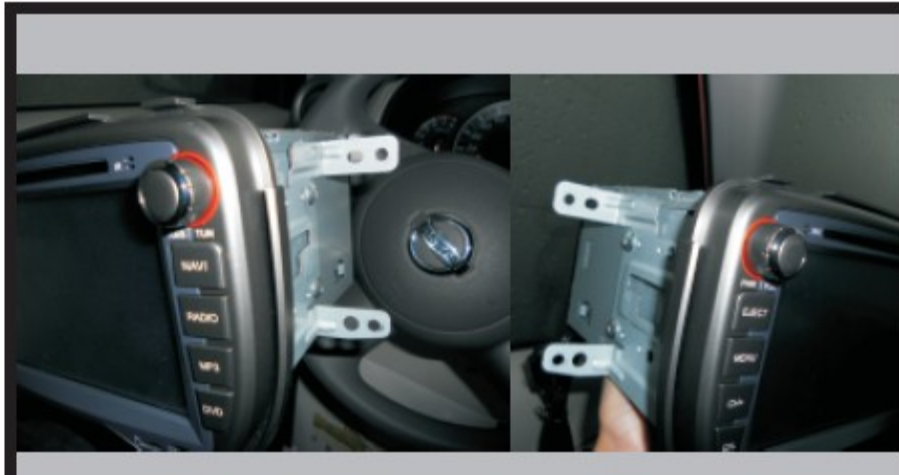
1. Before installation.



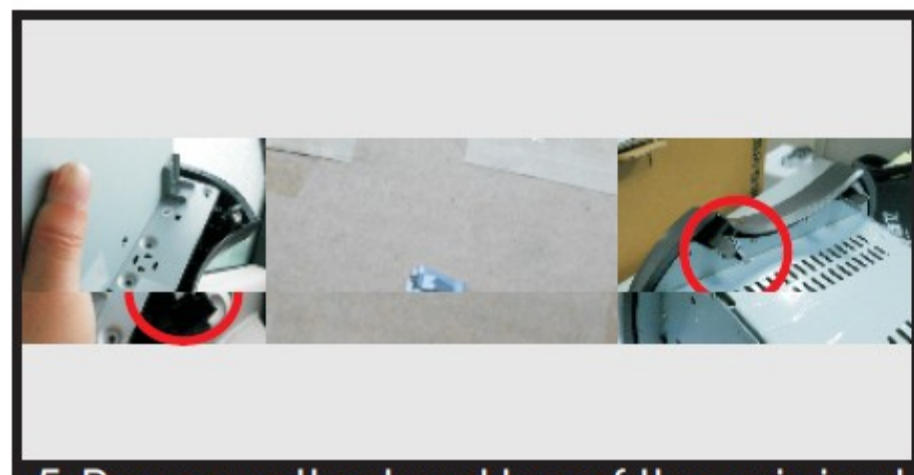
2. Pry the housing of the air outlet of air-conditioner, unplug the wires behind and remove it. Be care of the buckles.



3. Remove the fixing screws of the CD loader, unplug the wires behind and remove it.



4. Remove the brackets of the original CD loader and install them to our unit. (Mind to distinguish right and left)



5. Remove the buckles of the original CD loader and install them to the matching places in our unit.



6. Connect the wires of our unit and install it to the car. Fix the screws.



7. Install the housing of the air outlet and connect the wires. Be care of the buckles.



8. Installation finished.

INSTALLATION MANUAL

■ Precautions

1. Only the professional installing technicians are allowed to install and maintain this product.
2. Installation or maintenance by the unprofessional people might cause electric shock or other risks and even damage the unit.
3. In the process of connecting, pay attention to the hook position, don't pull wires forcibly to avoid invalid connection.
4. Please use the attached wire of the system, otherwise the accident of fire or smoke or damage to the unit or vehicle might be caused.
7. Ensure all lines are placed and protected in good condition, don't let them interfere in any moveable parts of the car such as steering wheel, gearlever, brake pedal, sliding chair, door or other parts.
8. The voice is input through AUX, so please ensure audio cable connects well with the AUX port of the original car audio system.