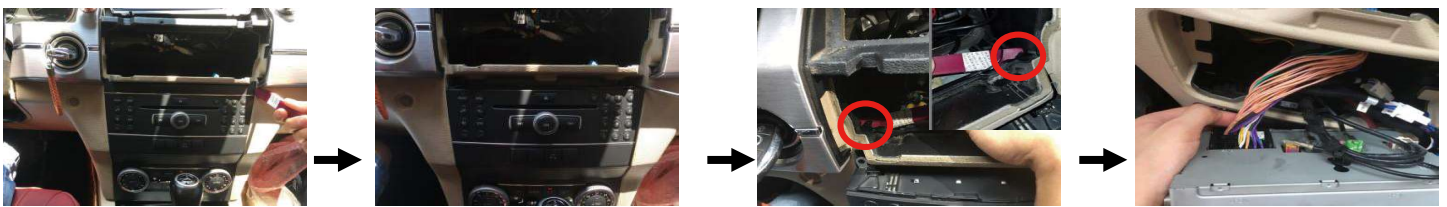
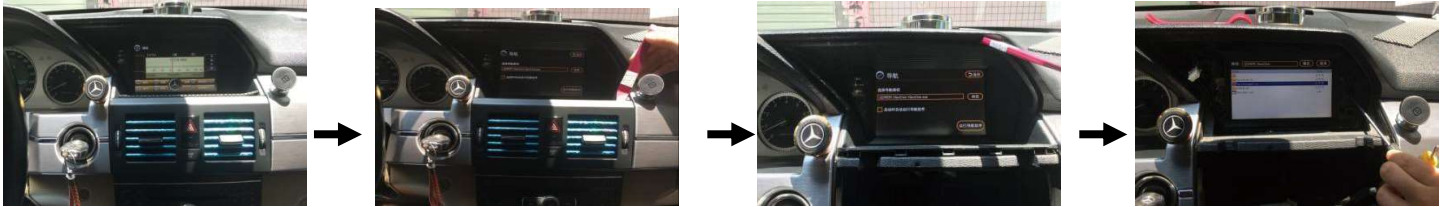


Mercedes-Benz GLK (X204) 2008-2012(NTG 4) installation guide

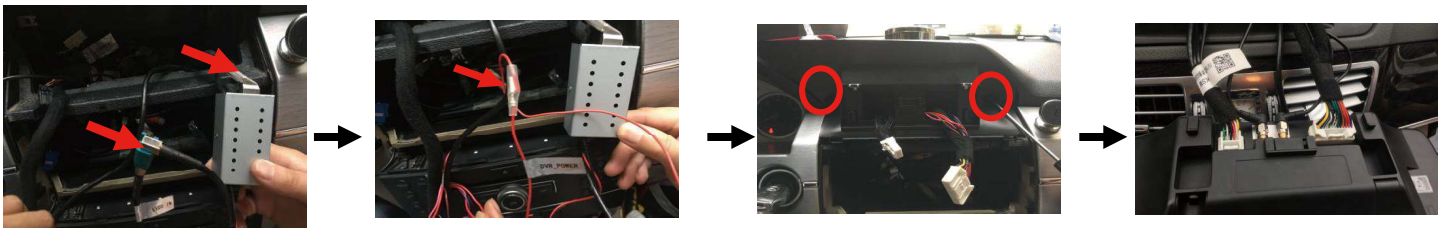


5.Pry out the decorative strip of the original monitor

6.Remove the fixing screws of the original monitor

7.Pry out the buckles from the left and right sides of the original host

8. Unplug the original power harness from Host,and connect it to android harness.



9. Connect original LVDS cable to LVDS adapter

10.Connect 12V power supply to LVDS adapter.

11.Assemble well the stand on original dashboard and put cables well

12. Connect well Android all cables.



13.Fixing and install android device

14.Effect picture after installation

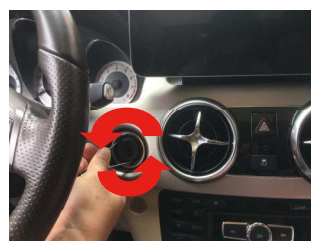
15. Android Cables connector

- 1.4G antenna Port
- 2.GPS antenna Port
- 3.RCA cable LVDS adapter
- 4.RCA Port
- 5.USB Port
- 6.Android Power Interface
- 7.2015/2016year shared CAN interface
- 8.2015/2016year short-circuited wiring interface
- 9.Audio USB port
- 10.2015year CAN interface
- 11.2016year CAN interface
- 12.ISO female plug
- 13.ISO male plug

Mercedes-Benz GLK (X204) 2013-2015(NTG 4.5) installation guide



1. Original Monitor (Please power off before installation)



2. Use a tweezer to rotate the sliver ring in counterclockwise direction



3. Pry out the side cover of glove box.



4. Remove the side fixing screws from air conditioning port



5. Pry loose and take out the decorative plate



6. Pry loose and take out the frame of original monitor



7. Remove the left and right fixing screws of the original monitor and take out the panel.



8. Loosen the left and right fixing screws of the original HOST



9. Pry out the original HOST



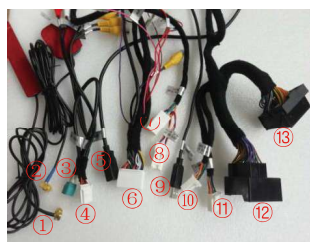
10. Remove the power harness from original host, and connect it to android harness.



11. Assemble well the stand on Android monitor



12. Effect picture after installation



13. Android Cables connector

- 1.4G antenna Port
- 2.GPS antenna Port
- 3.RCA cable LVDS adapter
- 4.RCA Port
- 5.USB Port
- 6.Android Power Interface
- 7.2015/2016year shared CAN interface
- 8.2015/2016year short-circuited wiring interface
- 9.Audio USB port
- 10.2015year CAN interface
- 11.2016year CAN interface
- 12.ISO female plug
- 13.ISO male plug