

Q5 Installation guide



1. The original car control
(Power off before installation)



2. Pry out the right side baffle



3. Unscrew the left set screw



4. Pry out the central control silver trim



5. Unscrew the retaining screw



6. Pry out the silver trim



7. Remove silver trim panel



8. Pry the cover off the handle



9. Unscrew the gear



10. Pry out the central control gear cover



11. Remove the screws on the left and right sides of the bottom plate



12. Remove ignition switch panel



13. Remove the function board with a lock



14. Unscrew the retaining screw



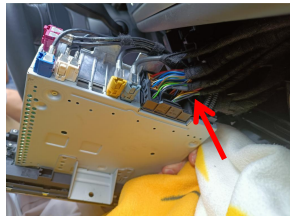
15. Unscrew the air conditioner air outlet 1



16. Unscrew the air conditioner air outlet 2



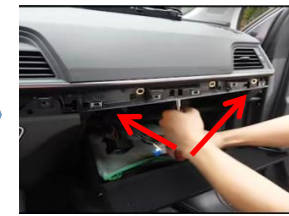
17. Remove the original engine with a lock



18. Remove the original engine



19. Unscrew the inside of the glove box



20. Unscrew the inside of the glove box



18. Remove the glove box



19. Transfer to our power line



20. Remove the air conditioner control panel



21. Pry loose the trim panel under the dashboard



22.Remove the air conditioner air outlet panel 1



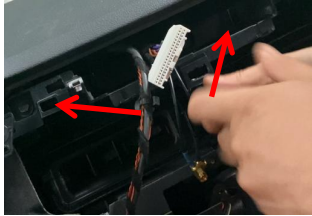
23.Remove the air conditioner air outlet panel 2



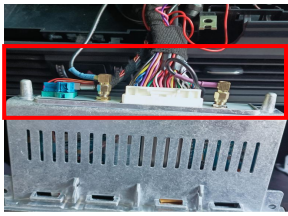
24.Remove the air conditioner air outlet panel 3



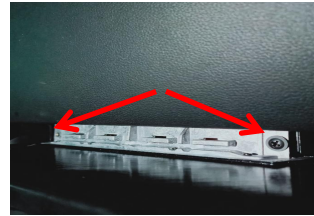
25.Remove the original display screen



26.Mounting machine base



27.Adapter 4G,GPS,LVDS, power plug



28.Install the machine and lock the base screws

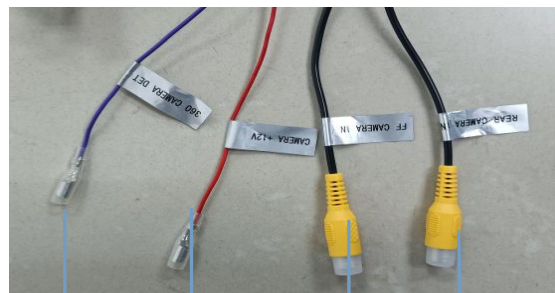


29.Install top cover trim strip

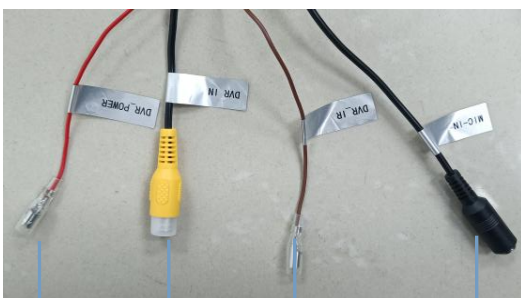


30.Installation completed effect drawing

Android wire functional interface definition diagram



360 Camera power supply Front camera Rear camera



12V CVBS_DVR DVR_IR External microphone



AUX USB1 SIM card USB2