

Warm Tips

1. Don't use strong chemical products, cleaning agents or detergents to clean the product.
2. Please use soft and clean cloth to clean the display screen; it is not advised to use paper to clean.
3. LED screen is easy to be scratched, please use touch pen to operate. Don't use sharp objects to write on the screen to avoid screen damage.
4. Do not maintain or install the product by yourself. The power must be cut off when the product is being installed. It is especially dangerous if the product is installed or maintained by the person without training or experiences of electronic equipment and car accessories installation.
5. Before installation, please confirm with the car owner whether the audio system of original car works normally and whether there are scratches or not.
6. Please protect the car instrument panel. Removed parts should be placed properly and the left-off parts should be saved with the original car radio. Try to use the screws from the original car to fix corresponding parts. Double USB cables should be extracted from the storage compartment of the co-pilot's position.
7. Navigation and back reverse camera is only for driving assistance and they cannot replace your attention and judgment while driving.
8. This installation manual mainly explained the installation method of our product. Please install the GPS antenna, back reverse camera and digital TV box and other parts through conventional ways.
9. When install the TV box, connecting "TV-CONT" cable can realize the touch control of TV.
10. When using external microphone, the microphone can be fixed on the sunbreaker in front of the driver.

This files are only for reference, which is subject to change without notice.
Our company interpretation the right to make final of this installation manual.



INSTALLATION MANUAL



Special for
LexusRX270

IN-DASH CAR MULTIMEDIA SYSTEM



The diagram of the original CD unit



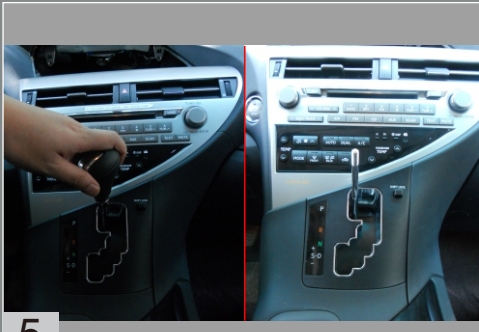
Take out the original frame which is covered the original display screen



After that, you can see the original display screen, then take out the three screws as shown in the pictures



Take out the original display screen and remove the cables at the back of it



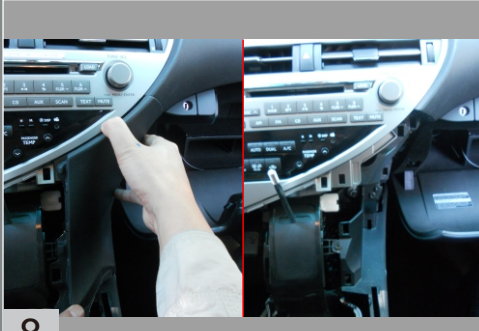
Screw off the handle of gear



Pry the panel of arm rest as the picture shown with plastic crow plate, be care of those buckles



Take out the panel of arm rest, remove those cables



Take out the panel at the right of the original unit



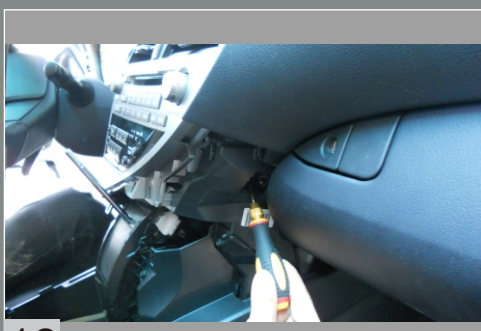
Pry the panel at the right of steering wheel



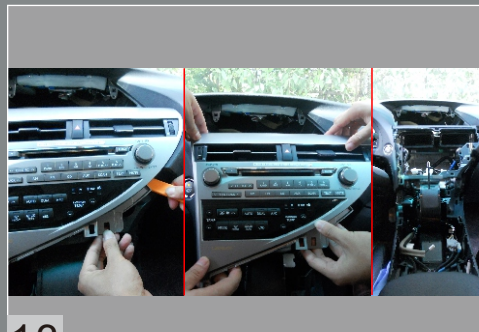
Then take out that panel



Take out the left screw which be shown in the picture



Take out the right screw which be shown in the picture



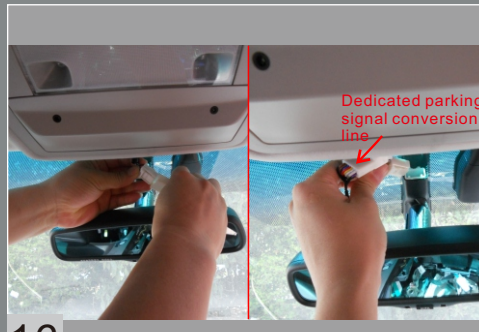
Pry and take out the original unit, then remove those cables at the back of it



Take out the small panel in the middle of front windshield



Take out the connector



Connect the original reverse cable with the special connected cable



Hide that cable on the top of roof



Install that small panel back



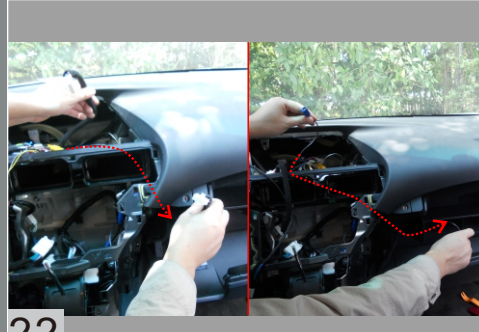
Hide and cross that cable to display screen as shown in the picture



Connect the special steering wheel cable with the original connector



Cross the AUX cable (in the power cable) through to arm rest as shown in the picture



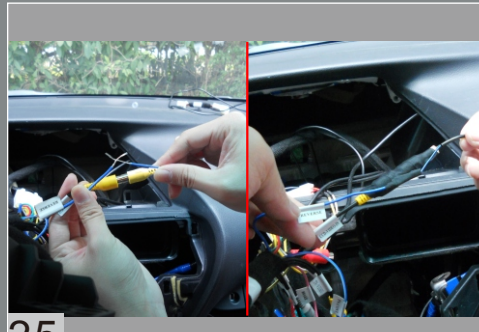
Cross the DVD connected cable through to the glove box as shown in the picture



Cross the USB cable through to glove box as shown in the picture



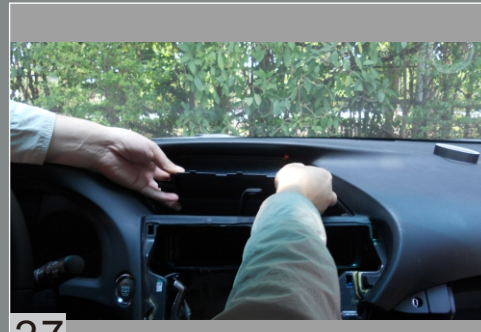
Connect those cables which in the back of AVN unit



Connect the reverse cable (in the special cable) with that cable which you cross from step 19



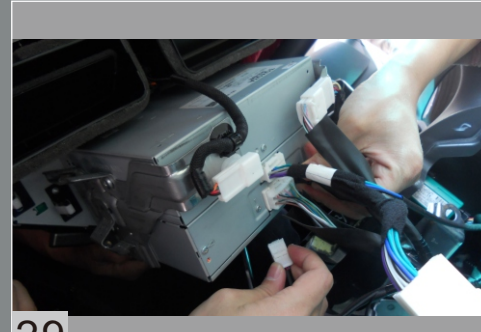
Take out the buckles from the original display and install them to the AVN unit



Install the AVN unit to the fixed position as shown in the picture



Fasten those screws to fix the unit



Connect those cables at the back of original unit



Install the original unit back



Fasten those screws which in the both side of original unit



Install the right panel back



Install the left panel back



Connect those cables in the back of the arm rest and install it back



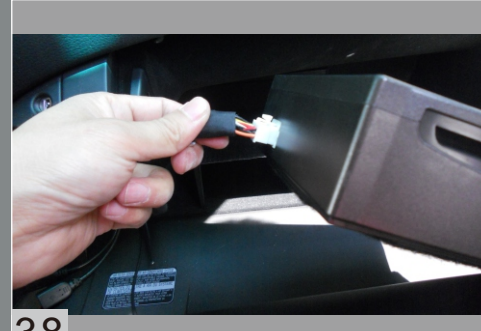
Install the handle back



Install the frame of the original display back



Paste the special paster to the glove box and the button of the DVD box



Connect the DVD cable well



Paste the DVD box to glove box



The diagram of installation done